



Easy English Version



Hunter Disability Services

NDIS

Contents:

What is the National Disability Insurance Scheme (NDIS)?

What is the National Disability Insurance Agency (NDIA)?

What does the NDIS fund?

What is an NDIS plan? Who can get the NDIS?

When will the NDIS come to my area?

Who can I ask questions about the NDIS?

Words in this sheet

What is the National Disability Insurance Scheme (NDIS)?

The National Disability Insurance Scheme is also called the NDIS

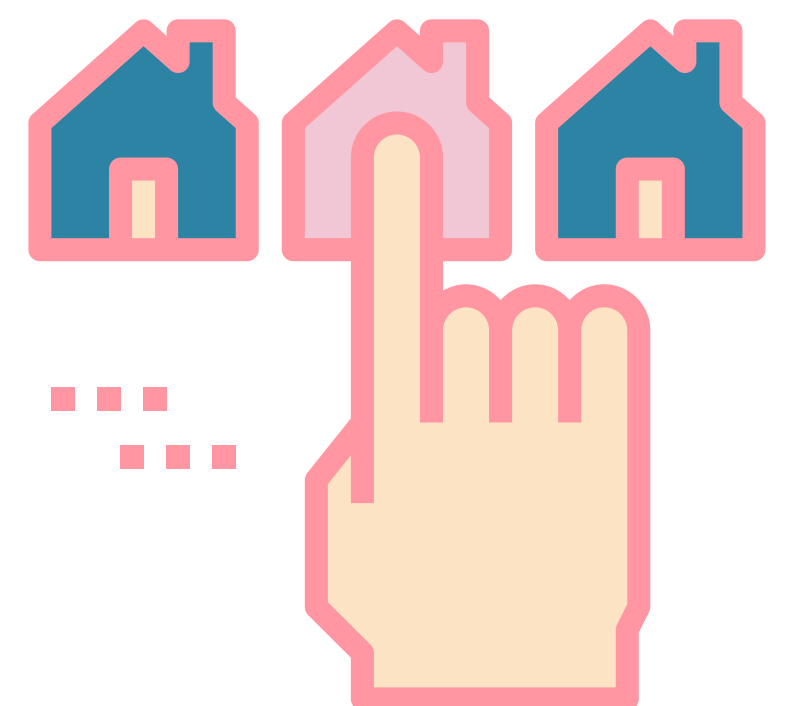


The NDIS is the new way of funding disability support.



The NDIS means you will receive your funding in a different way.

Your funding will be paid to you instead of **service providers** like Hunter Disability Services.



You will be able to choose which service provider you would like to use.

Your family and carers can help you choose if you want them to.

What is the National Disability Insurance Agency (NDIA)?

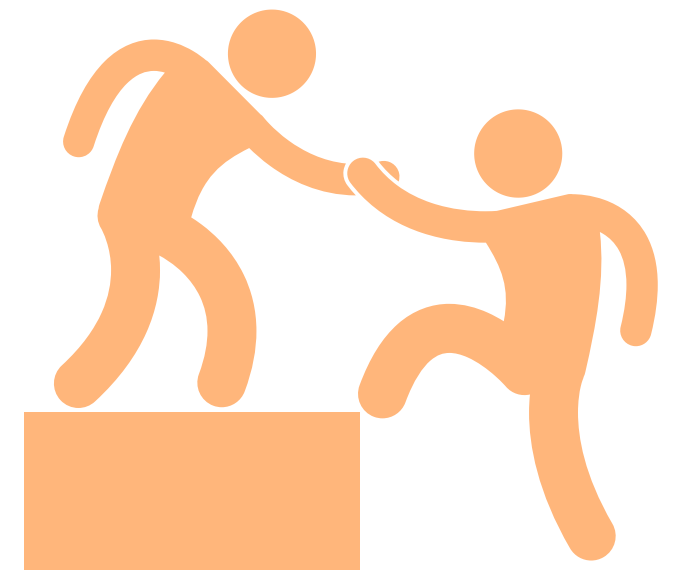
The National Disability Insurance Agency is also called the NDIA.



The NDIA has the job of making the NDIS work properly.

The NDIA can tell you:

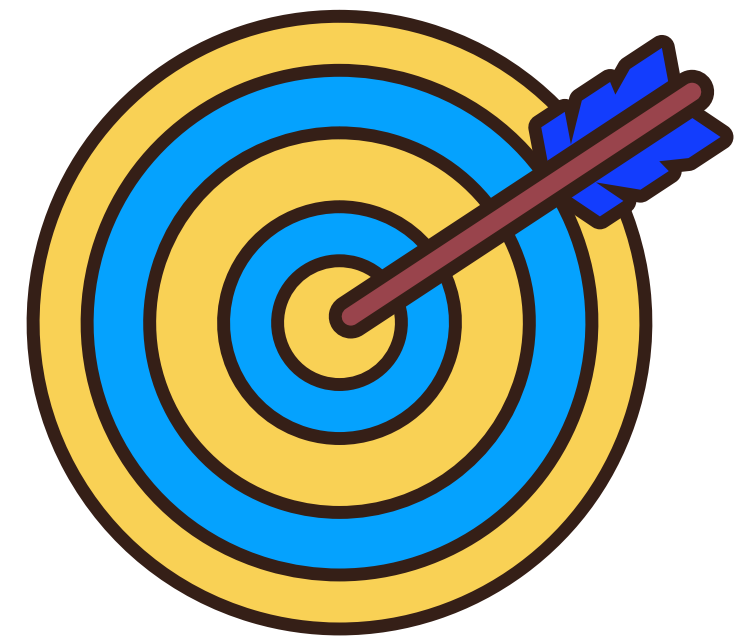
- how the NDIS will work
- and**
- what help you can get



What does the NDIS fund?

With the NDIS, you can get funding for

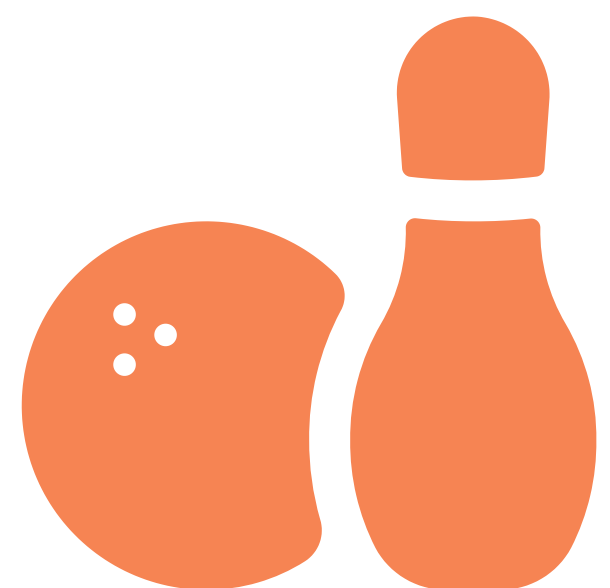
- what you need every day
- and**
- your goals



Your goals are things that are important to you.

Your goals may be about

- where you live
- what you like to do
- where you want to go
- where you want to work



or

- what you would like to learn.

The NDIS only funds support linked to your disability

The NDIS does not fund daily costs like

- rent or board
- food



or

- phone bills



To get funding, you must create a plan

What is an NDIS plan?

Everyone who accesses the NDIS will have to make a plan



You will make your plan with a person chosen by the National Disability Insurance Agency (NDIA)

This person may be called a planner or a **Local Area Coordinator**

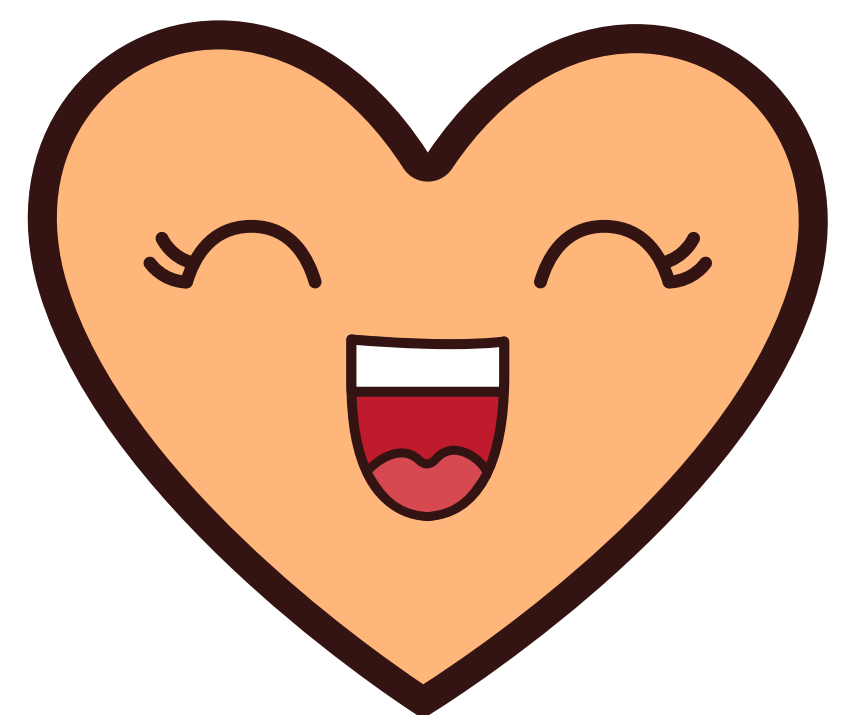
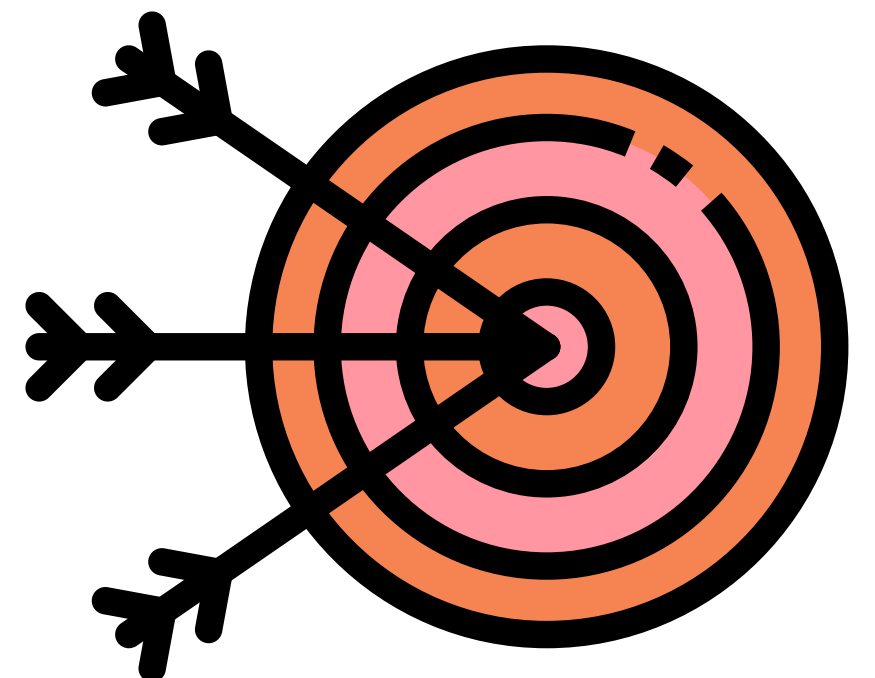
Your Person you plan with will **talk to you about**

- what you want
- and**
- what you need



help you to

- set your goals
- and**
- choose the support that will go in your plan
- support you to work together with your family and carers
- tell you about services available in the community



- support you to develop a service agreement with your service provider



Your plan will include:

- the support you need
- your goals

and

- how much money you have to spend on these things



Once your plan is finished, you can choose:



- Who will provide your support
This will be who you pay for services

- When you get your support
For example, during the day or at night



- **Who will manage your funds.**
This could be you, a family member or someone you ask to do this for you

How can I get ready to plan?

Before you meet with a planner you should think about

- what you get now
- what you want to do
- how these things will be put into your plan
- who you would like to help you prepare your plan

and

go to the meeting with you

You might choose a family member or advocate or group of people to help you

Your plan should include the help you will need:

now

in the future

- to get a job if you would like one
- to do more things in the community
- to learn new things if you would like to

You can talk about this with your

- family
- friends
- advocates

and

- HDS / other organisations you get services from



Who can get the NDIS?

You have to be eligible to use the NDIS

To get the NDIS you must

- live where the NDIS is available
- have a disability that means you need support for your lifetime

and

- need some help to do the things you want to do



Words in this sheet

Funding

Money you get from the government to help you with the things you need and want to do

Service Provider

A company or business who has staff that can help you with things you need, like support around the house or to get around your local area.

HDS is a service provider.

Local Area Coordinator

A Local Area Coordinator is someone chosen by the NDIS to work with you to create your plan and connect you to the community.

Service agreement

A document that says

- the service you want e.g. help at home
- when you will receive your service e.g. every morning

- where you will receive your service e.g. at home or in the community
- the cost of the service

and

- any other rules about using the service

Advocate

People who tell other people about

- what you need
- problems you have

and

- your rights

Australian citizen

Someone who is

- born in Australia
- moved to Australia and has paperwork to say they are Australian

or

- has special paperwork to say that they can live in Australia

Eligible

Having the right to do or receive something

Need language help?

Contact the Translating and

INterpreting Service (TIS) on 13 14 50)